

An Algorithm for Calculating Gas Transmission System Optimal Stationary Mode

Andrey A. Belevitin^{1,*}

¹ NIIGazekonomika LTD, 20-8, Staraya Basmannaya str., Moscow, Russia, 105066

Abstract. In this paper, we consider the problem of calculating the optimal stationary mode of the gas transmission system. The maximum throughput of the gas transmission system was used as optimization criterion. Presented are the problem statement and the solution procedure. The original problem is divided into two interrelated components: the MINLP problem and the temperature calculation. To solve the MINLP problem, the Successive Linear Programming (SLP) method was used in combination with the branch and boundary method applied to integer variables. Modeling of compressor shop operating modes was performed using integer variables. Described are the approaches to improving the convergence of the algorithm: the introduction of an additional optimization subcriterion and additional constraints for gas flows through GTS sections.

1 Introduction

The gas transmission system (GTS) is a complex system that consists of a large number of objects including compressor shops, gas pipelines, etc. Control of GTS requires the calculation of optimal stationary modes per various criteria: minimization of gas consumption at compressor stations, throughput maximization and other [1]. A lot of works are devoted to the calculation of GTS optimal stationary modes, some refer to the optimization of compressor stations operating modes [2-6]. Computational methods used include dynamic programming [7-10], gradient search [1], MILP and MINLP [3, 11, 12], evolutionary algorithms [2, 4, 5, 13] and other methods [14, 15].

In this paper, we consider approaches to optimizing the GTS stationary mode according to the maximum throughput criterion. At the same time, the proposed approaches are valid when using other optimization criteria (minimization of gas consumption at compressor stations etc.). The value of GTS maximum throughput is influenced by many factors: input and output boundary conditions, ambient temperature, repair works, technical condition of GTS objects and so on. Maximum throughput values of sections of the Unified Gas Supply System (UGSS) of Russia are widely used in the national gas industry in solving various practical problems.

Section 2 of this paper describes the problem statement. Subsection 3.1 contains the algorithm for solving the problem. Section 3.2 describes dividing the original problem into the MINLP problem and the temperature calculation. Subsection 3.3 contains the method

* Corresponding author: A.Belevitin@econom.gazprom.ru

applied to resolving the MINLP problem. Subsection 3.4 describes an approach to modeling of compressor shop operation modes. Sections 3.5 and 3.6 contains approaches to improving the convergence of the algorithm. Section 4 provides a practical example of the calculation.

2 Problem Statement

It is required to calculate the GTS optimal stationary mode according to the maximum throughput criterion. Within the GTS frames, we distinguish two boundary conditions (input and output), which we call «transit» boundary conditions and we set pressure constraints for them. For other boundary conditions, we set gas flow rates. It is assumed that a compressor shop can operate in «discharge» and «bypass» modes. The mode type of the compressor shop «discharge» is modeled using a set of polynomials [16]. The mode type of the compressor shop «bypass» corresponds to the equality of the compression ratio to one. The problem of calculating the maximum throughput mode is to find the operating modes of the compressor shops and the GTS condition (gas flows through GTS sections, pressure and temperature values at GTS nodes) corresponding to the maximum of gas flow rates at the input q_{in}^{trans} and output q_{out}^{trans} «transit» GTS boundary conditions:

$$F_1 = q_{in}^{trans} + q_{out}^{trans} \rightarrow \max . \quad (1)$$

3 Solution Procedure

3.1 Algorithm

Fig. 1 shows the block diagram of the algorithm for calculating the GTS optimal stationary mode by the maximum throughput criterion.

The calculation of the GTS optimal stationary mode is an iterative process. Break-down of the original problem into two interrelated components is performed: the MINLP problem [17] and the temperature calculation (subsection 3.2). Firstly, the GTS equivalence procedure is performed (removal of elements without hydraulic resistance, aggregation of successive gas pipelines with the same parameters etc.). The initial approximations for parameters fixed in the MINLP problem are set: gas temperature values at nodes, average gas temperature values along the length of gas pipelines, gas properties (compressibility factor, etc.) for gas pipelines and compressor shops. The MINLP problem is solved (subsection 3.3). Next, the temperature calculation is performed (Subsection 3.2). The source data for the temperature calculation are as follows: gas flows through GTS sections, compression ratio of compressor shops and pressure values for the «transit» boundary conditions. The results of the temperature calculation are values of gas temperature at GTS nodes, average gas temperature values along the length of the gas pipelines and gas properties (compressibility factor, etc.) for gas pipelines and compressor shops. The stop criterion is checked, which is reaching of allowable difference for two adjacent iterations per gas flows through GTS sections, gas pressure and temperature values at GTS nodes.

Starting with the iteration number $t = t_2$, integer variables are fixed in the MINLP problem (operating mode type and number of active gas-compressor units of compressor shops). Fixing integer variables significantly reduces the total calculation time and improves the convergence of the algorithm. Starting from the iteration number $t = t_1$, additional constraints for gas flows through GTS sections are added to the MINLP problem (subsection 3.6).

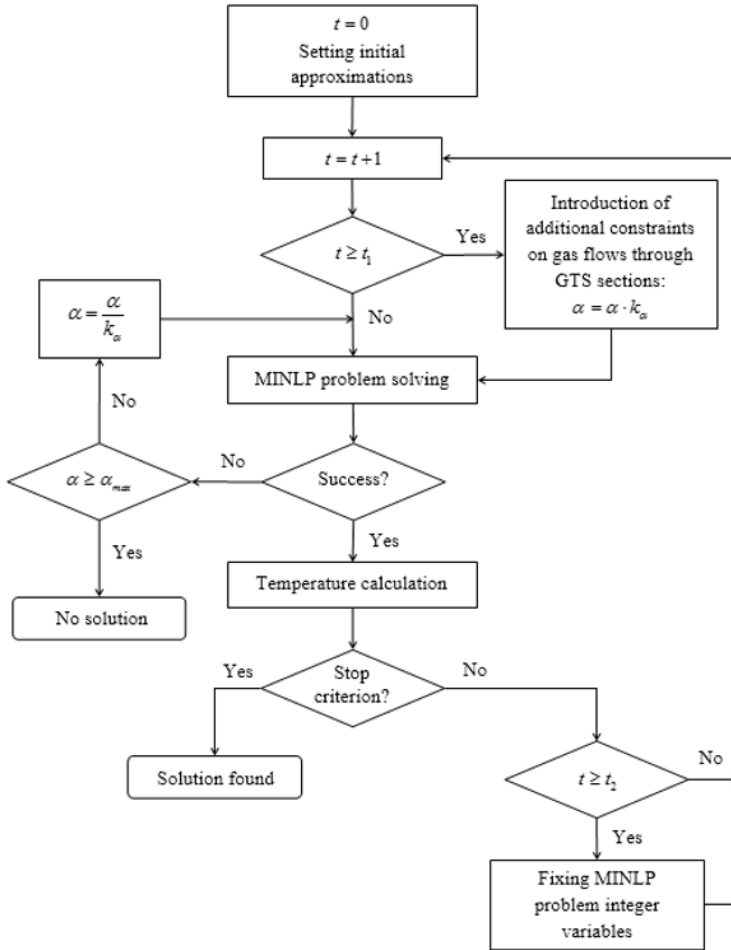


Fig. 1. Block diagram of the algorithm for calculating the GTS optimal stationary mode

3.2 Problem Dividing

Let's divide of the original problem into two parts: 1) MINLP problem [17]; 2)

1. Temperature calculation.

The MINLP problem is obtained from the original problem by fixing part of unknown variables, values of which are specified within the frames of the temperature calculation. In particular, MINLP problem has fixed (known) parameters like gas temperature values at GTS nodes and average gas temperature values along the length of the gas pipelines, gas properties (gas compressibility factor, etc.) for gas pipelines and compressor shops. In the temperature calculation, the known ones are considered to be the gas flows through GTS sections, compression ratios of compressor shops, gas pressure values for «transit» boundary conditions. When performing the division of the original problem, much attention was paid to the analysis of the «degree» of nonlinearity of the obtained MINLP problem because it is the solution of that problem represents the greatest computational complexity and time consumption.

3.3 MINLP Problem Solving

The MINLP problem consists of equations for gas pipelines, compressor shops, boundary conditions and Kirchhoff’s first law. The optimization criterion of the MINLP problem is the maximum throughput (1). The integer variables of the MINLP problem are the variables of the operating mode type and the number of active gas-compressor units of compressor shops. To solve the MINLP problem, the method of Successive Linear Programming (SLP) [18-21] is used in combination with the branch and bound method [17] in respect to integer variables.

3.4 Modeling of Compressor Shop Modes

For each compressor shop two integer variables are used: binary variable x for operating mode type ($x=0$ – «discharge» mode, $x=1$ – «bypass» mode) and an integer variable $n = \{1, N\}$, corresponding to the number of active gas-compressor units.

Conventionally, we denote a group of equations describing the «discharge» mode as $y_1(\mathbf{X})$, and the group of equations describing «bypass» mode as $y_2(\mathbf{X})$. The group that is executed will be determined by the criterion $F(\mathbf{X})$. As a result, we get the following problem:

$$\begin{cases} (y_1(\mathbf{X})=0) \\ \quad OR \\ (y_2(\mathbf{X})=0) \\ F(\mathbf{X}) \rightarrow \max \end{cases} \tag{2}$$

Let’s perform conversion of the problem (2) and bring it to the form (3). To do this, each equality is equivalently replaced by two inequalities, and a constant A is introduced, its value obviously being more than right-hand sides of equations in both groups. The form (3) problem is used for the MINLP problem (subsection 3.2)

$$\begin{cases} y_1(\mathbf{X}) + x_a \cdot A \geq 0 \\ y_1(\mathbf{X}) - x_a \cdot A \leq 0 \\ y_2(\mathbf{X}) + (1 - x_a) \cdot A \geq 0 \\ y_2(\mathbf{X}) - (1 - x_a) \cdot A \leq 0 \\ F(\mathbf{X}) \rightarrow \max \end{cases} \tag{3}$$

3.5. Introduction of Additional Criterion

The MINLP problem (Section 3.2) can have many different solutions with the same criterion value. Thus, there may be situations in which neighboring iterations of the algorithm produce solutions that are very different from each other in terms of values of problem unknown variables, which adversely affect the convergence of the algorithm. Let’s introduce an additional criterion: the sum of squared pressures at nodes $p_i^2 (i=1..M)$ with a significantly lower weight $w_2 = 0.01$ relative to the weight of the main criterion $w_1 = 1$. As a result, the criterion of the problem MINLP takes form (4). Introduction of an additional criterion reduces the dimension of the set of solutions to the MINLP problem. At the same time, the low weight of the additional criterion leads to the fact that the latter does not have a significant effect on the main criterion.

$$F_2 = w_1 \cdot (q_{in}^{trans} + q_{out}^{trans}) - w_2 \cdot \sum_{i=1}^M p_i^2 \rightarrow \max . \quad (4)$$

3.6. Introduction of Additional Constraints on Gas Flows through GTS Sections

Another approach to improvement of the algorithm convergence is to introduce additional constraints on gas flows through GTS sections, starting with the iteration number $t = t_1$:

$$\begin{cases} q' \geq 0 : q^{t-1} \cdot (1 - \alpha) \leq q' \leq q^{t-1} \cdot (1 + \alpha) \\ q' < 0 : q^{t-1} \cdot (1 + \alpha) \leq q' \leq q^{t-1} \cdot (1 - \alpha) \end{cases} \quad (5)$$

These constraints mean that the value of gas flow through the GTS section at the next iteration q' can deviate from the value at the previous iteration q^{t-1} by no more than a relative value α . Dependence of the α parameter on the iteration number t can be given in various ways. In this paper, the introduction of additional constraints for gas flows through GTS sections started with the iteration number $t_1 = 4$, and the initial value $\alpha_0 = 1$ was used. Further, if the calculation was successful at the current iteration (the solution of the MINLP problem was found), then the value of parameter α decreased by four times. Otherwise (the solution of the MINLP problem was not available) it increased by four times. It was assumed that there was no solution to the problem if parameter α reached the value $\alpha_{max} = 2$.

4 Results

The described algorithm was implemented using the C# programming language and was connected to a graphical interface as a calculation module, which allows visual editing of the GTS and displaying the calculation results. In consequence of which optimal stationary modes were calculated according to the maximum throughput criterion for different sections of the Unified Gas Supply System (UGSS) of Russia.

As an example, let's consider the calculation of the maximum throughput for one section of the UGSS of Russia (Fig. 2). This GTS includes 339 gas pipelines, 42 compressor shops, 55 boundary conditions and 2 «transit» boundary conditions.



Fig. 2. Calculated gas transmission system

The calculation was performed for $t = 8$ iterations. The first three iterations were continuously-integer, after that integer variables of the MINLP problem were fixed and then 5 continuous iterations were performed.

Additional constraints on gas flows through GTS sections were added since iteration number $t_1 = 4$ with the initial value $\alpha_0 = 1$. As a result of the calculation, the maximum throughput (per input) value was $580.4 \cdot 10^6$ m³/day. A similar calculation was made using «Astra-gas» (the most frequently used computing complex in PJSC Gazprom), the maximum throughput (per input) value was: $584.2 \cdot 10^6$ m³/day (difference 0.6%).

5 Conclusions

This paper covers the problem of calculating the GTS optimal stationary mode by the maximum throughput criterion. The proposed approaches are also valid when calculating the optimal GTS stationary modes according to other criteria (for example, minimization of gas consumption at compressor shops). The problem of GTS optimal stationary mode is divided into the MINLP problem and the temperature calculation. To solve the MINLP problem, the Successive Linear Programming (SLP) method is used combined with the branch and bound method in respect to integer variables. The approaches to improve the convergence of the algorithm are proposed: the introduction of an additional subcriterion and additional constraints of gas flows through GTS sections. The calculation of maximum throughput for one of the sections of the UGSS of Russia is handled as an example.

References

1. F. Tabkhi, *Optimization of gas transmission networks* (Ph.D. thesis, Grenoble INP, Grenoble, 2007)
2. T.M. Elshiekh, *Oil and Gas Facilities*, **4**, 59 (2014)
3. V. Uraikul, C. Chan, *J. Environ. Inform.*, **3**, 33 (2004)
4. B. Fahimnia, R. Molaei, M. Ebrahimi, *WSEAS Trans. on Systems and Control* **3**, 1 (2008)
5. X. Zhang, C. Wu, *Engineering Letters*, **23**, 258 (2015)
6. B. Bakhouya, D. Wolf, *Solving gas transmission problems by taking compressors into account* (University of the Littoral Opal Coast, Dunkerque, 2008)
7. G. Grelli, J. Gilmour, *Oil & Gas Journal*, **14**, 100 (1986)
8. E. Liu, C. Li, Y. Yang., *The Scientific World Journal*, **2014**, ID 506138 (2014)
9. C. Borraz-Sánchez, R.Z. Ríos-Mercado, *Hybrid metaheuristics. Second international workshop*, 54 (2005)
10. M.G. Sukharev, R.V. Samoilov, *Analysis and control of stationary and non-stationary modes of gas transportation* (GRSU of Oil and Gas, Moscow, 2016)
11. D. Cobos-Zaleta, R.Z. Ríos-Mercado, *XI Latin-Ibero-American conference on operations research*, paper A48-01 (2002)
12. S. Ebrahimi, A. Afshari, *Energy Equip. and Systems*, **6**, 351 (2018)
13. A. Arya, S. Honwad, *Journal of Petr. Expl. and Prod. Tech.*, **8**, 1389 (2017)
14. S. Wu, R.Z. Ríos-Mercado, E.A. Boyd, L.R. Scott, *Math. and Comp. Mod.*, **31**, 197 (2000)
15. D. Woldeyohannes, M.A.A. Majid, *J. of Energy and Power Engineering*, **3**, 19 (2009)
16. S.A. Sardanashvili, *Calculation methods and algorithms (pipeline gas transportation)* (Oil and Gas, Moscow, 2005)
17. J. Lee, S. Leyffer, *Mixed Integer Nonlinear Programming* (Springer, New York, 2012)
18. R.E. Griffith, R.A. Stewart, *Management Science*, **7**, 379-392 (1961)
19. J. Zang, *A successive linear programming method and its convergence on nonlinear problems* (University of Texas at Austin, Austin, 1983)
20. F. Palacios-Gomez, L. Lasdon, M. Engquist, *Management Science*, **28**, 1106-1120 (1982)
21. D.M. Himmelblau, *Applied nonlinear programming* (McGraw-Hill, New York, 1972)