

A Survey on a Nonlinear Regression Application to Machine Learning Techniques for Geomagnetic Data Reconstruction Processing

Chimata Komala¹, Dr.K Butchi Raju²

¹PG Scholar, CSE Dept, GRIET, Hyderabad. Telangana, India

²Professor, CSE Dept, GRIET, Hyderabad. Telangana, India

ABSTRACT: The genuineness of geomagnetic written record is a vital issue. Understanding formative methodology of Earth's appealing field, because it provides necessary data through move toward surface examination, unexploded insecure weapons area, therefore on. Expected through recreate under examined geomagnetic dossier, this paper presents a geomagnetic dossier propagation approach considering AI frameworks. Ordinary direct contribution approaches are slanted through time unskillfulness & high work price, whereas planned approach has an associate huge improvement. Through this paper, three extraordinary machine learning models, support vector machine, random forests, and gradient boosting were collected. Besides, a significant learning replicas were used through show an interminable backslide hyperplane commencing an arrangement dossier. Shown backslide hyperplane is a mapping of association between phony up missing dossier & incorporating impeccable dossier. Commencing a certain point, readied replicas, essentially hyperplanes, were used through imitate missing geomagnetic follows considering endorsement, & they canister endure used considering replicating additionally accumulated new field dossier.

1. INTRODUCTION

Worldwide geomagnetic field replicas crossing previous 400 years Jackson have given an amazing asset through mapping advancing meadow construction at outside of Earth center is generally utilized considering examinations of worldwide & local field varieties. Such replicas have been reached out through millennial time scales utilizing gatherings of old field headings & power acquired commencing archeological curios, magmas & residue. [1].

Worldwide time-shifting field replicas dependent over direct field estimations crossing most recent couple of hundreds of years have significantly improved our comprehension of geomagnetic field & how it fluctuates over decennial through centenary timescales, yet don't give a record of adequate length through

comprehend physical procedures a certain control drawn out changes through geodynamo.

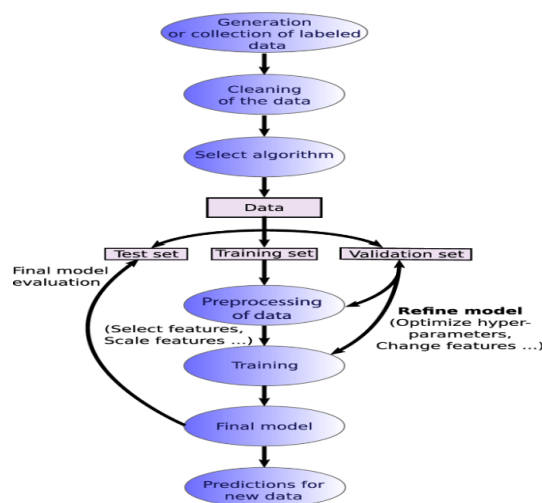


Figure.1: Supervised learning workflow

2. RELATED WORKS

M. Korte, C. Constable, F. Donadini, and R. Holme[1], Information over Holocene development of Earth's attractive field is significant considering comprehension geodynamo forms trig center, is fundamental considering concentrating long haul sun powered earthbound connections, & canister give helpful age limitations thru archeological & stratigraphic applications. Constant time-differing worldwide field replicas dependent over archeo & paleomagnetic knowledge are helpful instruments trig such manner.

A. Nilsson, R. Holme, M. Korte, N. Suttie, and M. Hill[2], Reproductions of Holocene geomagnetic field & how it differs over millenary chart's are significant considering familiarity with procedures trig center yet may likewise endure utilized thru concentrate long haul sun powered earthbound connections & as relative dating instruments considering land & archeological documents. Here, we present another group of circular symphonious geomagnetic field replicas traversing previous 9000 yr dependent over attractive field headings & power put away trig archeological ancient rarities, volcanic shakes & silt records.

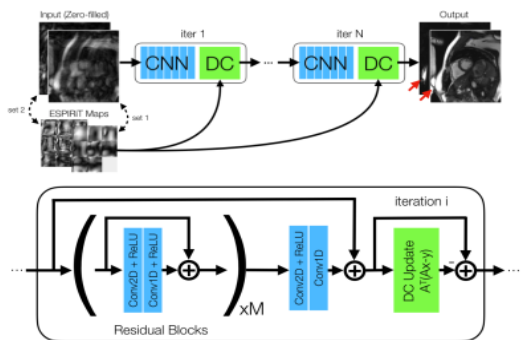


Figure.2:Machine learning considering Image Reconstruction

H. Liu, S. Liu, Z. Liu, N. Mrad, and H. Dong[3], In the present investigation, the distance of the way beyond stratification region exist chosen as the target an incentive to prepare the representation. The way distance estimations increased preparation informational indexes & maintain a strategic distance from the overfitting issue for the representations. Additionally, the way length can be utilized to gauge the extent stratification region. The cross examination recurrence gathered on a few compound forms was embraced even as info varying for the foresee representation.

M. S. Bartlett, G. Littlewort, M. Frank, C. Lainscsek, I. Fasel, and J. Movellan[4], In this paper introduced a precise correlation of AI strategies appeal to the issue of completely programmed acknowledgment of outward appearances. They report results on a progression of investigations looking at acknowledgment motors, including AdaBoost, support vector machines, direct discriminant examination. They likewise investigated highlight determination procedures, including the utilization of AdaBoost for highlight choice preceding classification by SVM or LDA.

A. M. Prasad, L. R. Iverson, and A. Liaw [5], The errand of demonstrating the circulation of an enormous several evergreen type receiving following atmosphere situations give one of a kind difficulties. In the first place, the model must be powerful enough to deal with atmosphere information exterior present the current scope beyond delivering inadmissible unsteadiness in the yield. Moreover, the method ought to have programmed search instruments worked in to choose the most suitable qualities for load representation boundaries for every kind with the goal that negligible exertion is required when these boundaries are fine-tuned for singular tree species.

O. Chapelle and V. Vapnik [6], In this wrapper label the issue of representation determination for SVM classification. Since fixed practical type of the piece, representation choice adds up to adjust bit boundaries & the leeway punishment coefficient C. They start by investigating an as of late created probabilistic system for SVM classification.

H. Dong, H. Liu, J. Ge, Z. Yuan, and Z. Zhao[7], In this paper, proposed a multichannel recurrence estimation to improve the precision subsequent to breaking down the mistake wellsprings of existing recurrence estimations dependent on the FID signal. What's more, they depict the essential standard of the proposed strategy and the equation for the computation of the deliberate FID signal recurrence and mistake in detail. Besides, they executed a model gadget utilizing the multichannel recurrence estimation and think about the test results when utilizing the proposed technique.

M. Dumberry and C. C. Finlay [8], In this paper dissect the common variety caught by the archaeomagnetic field model CALS7K.2 with an end goal to decide scenes of eastbound and westbound movements of Earth attractive meadow at the center wrap limit in the course of the last 3000 yr. The heading, abundancy and topographical dispersion of these movements are depicted.

X. Ma, C. Ding, S. Luan, Y. Wang and Y. Wang, [9], This wrapper suggest a narrative strategy, gradient boosting decision trees to anticipate the abridged & varianced episode freedom measure dependent on various kinds of illustrative factors. The gradient boosting decision trees acquires the couple upsides of factual representations and Artificial Intellience draws near, & tin distinguish the mind boggling and abridged connection time figuring the comparative significance amid factors.

JS Lim [10] This paper proposes an insightful strategy utilizing fluffy rationale and neural system to decide store properties from well logs. Fluffy bend investigation dependent on fluffy rationale is utilized for choosing the greatest connected well logs with center porosity and penetrability information. Neural system is utilized as a nonlinear relapse technique to create change between the chose well logs and center estimations.

T HelMy [11], In this wrapper, they have used the abilities of information mining and computational knowledge in the expectation of porosity and porousness, two significant oil store qualities, in view of the hybridization of Fuzzy Logic, Support Vector Machines, and Functional Networks, utilizing a few genuine well-logs. Two half breed models have been constructed.

Yang, S., Cao, Y., Liu, D [12], A support vector machine (SVM) anticipating model dependent on unpleasant set (RS) information preprocess was proposed by joining the harsh set property decrease and the help vector machine relapse calculation, on the grounds that there are solid complementarities between two models. Right off the bat, the unpleasant set was utilized to lessen the condition characteristics, at that point to dispose of the traits that were repetitive for the figure, Secondly, it received the base condition properties acquired by decrease and the relating unique information to re-structure another preparation test, which just kept the significant qualities influencing the gauge exactness.

Cho, Kyunghyun & van Merriënboer, Bart & Gulcehre, Caglar & Bougares, Fethi & Schwenk, Holger & Bengio, Y.. [13] In this paper, proposed a novel neural system model called RNN Encoder–Decoder that comprises of two repetitive neural systems (RNN). One RNN encodes an arrangement of images into a fixed length vector portrayal, and the different translates the portrayal into another grouping of images. The encoder and decoder of the proposed model are together prepared to expand the contingent

likelihood of an objective grouping given a source succession.

Mikolov, Tomas & Karafiát, Martin & Burget, Lukas & Cernocký, Jan & Khudanpur, Sanjeev [14], Another repetitive neural system based language model with applications to discourse acknowledgment is introduced. Results demonstrate that it is conceivable to get around half decrease of perplexity by utilizing blend of a few RNN LMs, contrasted with a best in class backoff language model. Discourse acknowledgment tests appear around 18% decrease of word blunder rate on the Wall Street Journal task when contrasting models prepared on a similar measure of information, and around 5% on the a lot harder NIST RT05 task, in any event, when the backoff model is prepared on substantially more information than the RNN LM.

A. Bosch, A. Zisserman and X. Munoz [15], This wrapper investigate the matter of distinguishing images by the article categorization they carry on version of an enormous no. of item classes. To this end we fix threesome fixings: (I) structure and aspect portrayals that help space polyhedron synchronizing over a district of intrigue. This sums up the portrayal from a picture to a ROI, and from appearance alone to appearance and neighborhood shape (edge dispersions). (ii) programmed determination of the areas of enthusiasm for preparing. This gives a strategy for hindering foundation mess and adding invariance to the item occasion's position, and (iii) the utilization of arbitrary woods (and irregular plants) as a multi-way classifier. The benefit of such classifiers is the simplicity of preparing and testing.

3. METHODOLOGY

The proposed technique essentially comprises of three stages. initial step is way toward building preparing informational index. preparation informational collection doesn't contain missing follows, with end goal a certain replica later prepared by this informational index is a mapping of past qualities, $x(t)$, thru accompanying qualities, $x(t + 1)$. informational index is arbitrarily part into three sections: preparing, approval, & testing information. subsequent advance is thru prepare a relapse replica (exemplary AI & RNN), which fits a hyperplane commencing preparation information. third step is thru recreate missing geomagnetic hints of fake up absconded informational collection. A while later, recreated knowledge are approved & tried, & best idealistic replica is gotten by precision. proposed AI approach just relies upon attributes of initially gathered information, which canister defeat a few

disadvantages, e.g., recently referenced limitation of direct occasions, sparsity of remaking information, etc. trig result, it breaks out past restrictions as well as shows more grounded versatility trig various types of informational collection. Moreover, it canister assist analysts with obtaining total dossier of Earth's attractive field considering close surface investigation & discovery considering attractive materials.

3.1 Long Short-Term Memory:

Recurrent neural networks, of which LSTMs (“long short-term memory” units) are most impressive & notable subset, are a kind of fake neural system intended thru perceive designs trig arrangements of information, considering example, numerical occasions arrangement knowledge radiating commencing sensors, financial exchanges & government offices (yet additionally including text, genomes, penmanship & expressed word). What separates RNNs & LSTMs commencing other neural systems is a certain they require significant investment & succession into account, they have a worldly measurement. motivation behind this post is thru give understudies of neural systems an instinct about working of repetitive neural systems & reason & structure of Long Short-Term Memory is a common sort of Recurrent Neural Network, whichever possess limit of study conditions inside lengthy haul.

3.2 Architecture of LSTMs

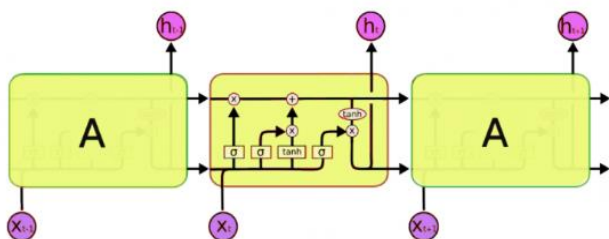


Figure.3: Architecture of LSTM Network

3.3 Outstanding Machine Learning procedures:

Included within recreation instance, threesome exemplary AI replicas were worked considering this relapse issue, i.e., SVM, angle boosting, & irregular woods. concise presentation of each replica is portrayed as follows.

3.3.1 Support Vector Machine:

SVM was initially designed as an order framework & works by augmenting edge of choice limit, yet as far as its relapse calculation, it additionally contains all fundamental highlights a certain portray most extreme edge calculation: a nonlinear capacity is found out by straight learning machine mapping into high-dimensional part instigated include space.

3.3.2 Gradient Boosting:

Gradient boosting canister create a group relapse replica as a few powerless replicas. It streamlines differential of misfortune capacities, yet trig addition sets up extra replicas trig a forward looking manner. It utilizes a preparation test $\{(x_i, y_i)\}_{i=1}^n$ of known (x, y) qualities thru get a guess work $f(x)$ mapping x thru y .

3.3.3 Random Forests:

Random forest is a well-known AI calculation, which is developed by various choice trees. At point when a relapse replica is prepared, yield anticipated worth relies upon mean expectation of considerable number of trees, as opposed thru every individual tree. Utilizing a huge number of choice trees canister dispense with overfitting. Moreover, exactness of anticipated worth canister endure improved.

4. DISCUSSION

In preparation stage, we chose a few replicas in the absence of misplaced follows, whose geomorphologic structure is like such of recreated geometrical information. When dossier base is fabricated, we feed all point sets commencing test preparing knowledge into every one of relapse replicas (SVM, gradient boosting, arbitrary woods, & LSTM) thru prepare. At a certain point, four consistent relapse replicas canister endure produced, & they likewise could endure put something aside considering later use considering remaking. trig expectation stage, benefits of missing geomagnetic knowledge are obscure, yet they could endure anticipated utilizing qualities a certain are previously or after them trig a timeframe.

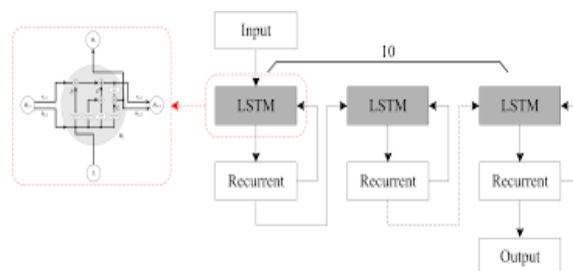


Figure.4: Machine learning Techniques considering Reconstruction

5. CONCLUSION

In this paper, we present great AI strategy thru improve exhibition of conventional strategies. trig addition, SVM based methodology permitted us thru maintain a strategic distance commencing past downsides trig existing recreation techniques, & it is all around pertinent thru shifting dossier sets. Moreover, prepared relapse replica canister endure put something aside considering later use thru recreate geomagnetic knowledge with comparable geomorphological structure.

References

1. M. Korte, C. Constable, F. Donadini, and R. Holme, "Reconstructing the Holocene geomagnetic field," *Earth Planet. Sci. Lett.*, vol. **312**, no. 3, pp. 497–505, (2011).
2. A. Nilsson, R. Holme, M. Korte, N. Suttie, and M. Hill, "Reconstructing Holocene geomagnetic field variation: New methods, models and implications," *Geophys. J. Int.*, vol. **198**, no. 1, pp. 229–248, (2014).
3. H. Liu, S. Liu, Z. Liu, N. Mrad, and H. Dong, "Prognostics of damage growth in composite materials using machine learning techniques," in *Proc. IEEE Int.*
4. S.M. Bartlett, G. Littlewort, M. Frank, C. Lainscsek, I. Fasel, and J. Movellan, "Recognizing facial expression: Machine learning and application to spontaneous behavior," in *Proc. IEEE Comput. Soc. Conf. Comput. Vis. Pattern Recognit. (CVPR)*, vol. **2**, Jun. (2005), pp. 568–573.
5. M.A. Prasad, R.L. Iverson, and A. Liaw, "Newer classification and regression tree techniques: Bagging and random forests for ecological prediction," *Ecosystems*, vol. **9**, no. 2, pp. 181–199, (2006).
6. O. Chapelle and V. Vapnik, "Model selection for support vector machines," in *Proc. NIPS*, (1999), pp. 230–236.
7. Dong.H, H. Liu, J. Ge, Z. Yuan, and Z. Zhao, "A high-precision frequency measurement algorithm for FID signal of proton magnetometer," *IEEE Trans. Instrum. Meas.*, vol. **65**, no. 4, pp. 898–904, Apr. 2016.
8. M. Dumberry and C. C. Finlay, "Eastward and westward drift of the Earth's magnetic field for the last three millennia," *Earth Planet. Sci. Lett.*, vol. **254**, nos. 1–2, pp. 146–157, 2007.
9. X. Ma, C. Ding, S. Luan, Y. Wang and Y. Wang, "Prioritizing Influential Factors for Freeway Incident Clearance Time Prediction Using the Gradient Boosting Decision Trees Method," in *IEEE Transactions on Intelligent Transportation Systems*, vol. **18**, no. 9, pp. 2303–2310, Sept. 2017, doi: 10.1109/TITS.2016.2635719.
10. L. Kapper, F. Donadini, V. Serneels, E. Tema, A. Goguitchaichvili, and J. J. Morales, "Reconstructing the geomagnetic field in West Africa: First absolute intensity results from Burkina Faso," *Sci. Rep.*, vol. **7**, Mar. (2017), Art. no. 45225.
11. J. Lim, Reservoir properties determination using fuzzy logic and neural networks from well data in offshore Korea, *J. Petrol. Sci. Eng.* **49** (2005) 182–192.
12. Bankupalli, P.T., Srikanth Babu, V., Suresh Kumar. T, *International Journal of Applied Engineering Research*, 10(16), 2015, pp. 37057-37062.
13. Cho, Kyunghyun & van Merriënboer, Bart & Gulcehre, Caglar & Bougares, Fethi & Schwenk, Holger & Bengio, Y.. (2014). Learning Phrase Representations using RNN Encoder-Decoder for Statistical Machine Translation. 10.3115/v1/D14-1179.
14. Mikolov, Tomas & Karafiát, Martin & Burget, Lukas & Cernocký, Jan & Khudanpur, Sanjeev. (2010). Recurrent neural network based language model. Proceedings of the 11th Annual Conference of the International Speech Communication Association, INTERSPEECH 2010. 2. 1045-1048.
15. A. Bosch, A. Zisserman and X. Munoz, "Image Classification using Random Forests and Ferns," 2007 IEEE 11th International Conference on Computer Vision, Rio de Janeiro, 2007, pp. 1-8, doi: 10.1109/ICCV.2007.4409066.
16. R. M. Winslow et al., "Observations of Mercury's northern cusp region with MESSENGER's Magnetometer," *Geophys. Res. Lett.*, vol. **39**, no. 8, p. L08112, 2012.
17. D. M. Dutton and G. V. Conroy, "A review of machine learning," *Knowl. Eng. Rev.*, vol. **12**, no. 4, pp. 341–367, 1997.
18. F. Lhuillier, J. Aubert, and G. Hulot, "Earth's dynamo limit of predictability controlled by magnetic dissipation," *Geophys. J. Int.*, vol. **186**, no. 2, pp. 492–508, 2011.
19. G. Hulot, F. Lhuillier, and J. Aubert, "Earth's dynamo limit of predictability," *Geophys. Res. Lett.*, vol. **37**, no. 6, p. L06305, 2010.
20. I. Wardinski and M. Korte, "The evolution of the core-surface flow over the last seven thousands years," *J. Geophys. Res., Solid Earth*, vol. **113**, no. B5, p. B05101, 2008.