

Analysis of vegetation changes in land area of Syrdarya region using GIS technology and remote sensing data

Oykhumor Ruzikulova *

“Tashkent Institute of Irrigation and Agricultural Mechanization Engineers”, National Research University, Tashkent, Uzbekistan

Abstract. This article presents a map of vegetative changes in the Syrdarya region based on remote sensing data. Landsat 8 and Landsat 9 satellite images were used for analysis during the vegetation active period. The study examines the vegetation state of the selected area from 2000 to 2022 and analyzes the changes. The Normalized Difference Vegetation Index (NDVI) was calculated using ArcGIS 10.6 software and documented sequentially. The number of color-coded pixels on the map indicating the health and unhealthiness of the crops and the areas they occupy was determined through NDVI analysis. The study revealed a decrease in the vegetation layer in the Syrdarya region, and the reasons for this phenomenon were discussed. The article demonstrates the usefulness of remote sensing in analyzing vegetational changes over time and its potential applications in monitoring the health and productivity of crops in different regions. Overall, this research is valuable for developing strategies to mitigate the impact of vegetation loss in the Syrdarya region and similar regions facing similar challenges.

1 Introduction

Geographic Information Systems (GIS) have revolutionized the field of earth sciences by providing an automated hardware and software complex that collects, processes, stores, updates, analyzes, and manages topographic, geodetic, land resources, and other cartographic information about objects and events of nature and society[1–3]. GIS is a highly advanced computerized system that collects and processes large amounts of information using various methods and techniques in its database[4,5]. GIS systems are categorized based on the problem they are designed to solve. These categories include Earth information systems, Agricultural, Ecological, Educational, Marine, and other information systems[6,7]. The most common type of GIS is the geographic information system based on a large amount of data. Agriculture is an area that benefits greatly from GIS technology[8–10]. For example, GIS can be used to determine the area of arable land, monitor and analyze changes in vegetation through images taken from space, create spatial schemes or maps, and make predictions based on the collected data[11,12]. GIS also creates

* Corresponding author: oyhumor.ruzikulova@gmail.com

maps of soil layers, weather patterns, and various other purposes. Remote sensing is an important tool for studying terrestrial vegetation. Remote sensing systems are widely used to classify phenomena such as urban growth, land use cover change, vegetation index, and population statistics[13,14]. NDVI is a widely used vegetation index calculated by analyzing the visible red light and near-infrared light reflected by plants. Healthy plants absorb most of the visible red light and reflect most of the near-infrared light, while dense vegetation is less reflective in the red band and more reflective in the near-infrared. This allows reliable identification and analysis of vegetation cover separately from other natural land cover types [15,16]. The minimal temporal resolution of Landsat 8 and Landsat 9 satellite image data allows for the calculation of NDVI to provide operational information about the environment and climatic conditions and to monitor the dynamics of various parameters at a frequency of up to 1 week[17,18]. The large spatial coverage allows for the observation of areas proportional to the areas of regions and entire countries. Data from high-resolution cameras such as Landsat, IRS, and Aster allow for monitoring the condition of objects the size of a single field or forest stand. The ease of obtaining NDVI is also an advantage, as no additional data or methods are required to calculate the index, and it is not necessary to know the satellite image itself and its parameters[19,20]. The Near Infrared (NIR) layer is particularly useful for analyzing the development of plants and identifying water bodies. NDVI, SAVI, and various other indices can be generated using this layer. These indexes are used in various scientific research and are divided into two layers in all Landsat MSS satellites. In consumption, GIS has become an indispensable tool in earth sciences, and its potential uses are vast. It allows for the processing and analysis of large amounts of data and enables the creation of detailed maps and models of the natural and built environment. Remote sensing, coupled with GIS, allows for the monitoring and analysis of changes in vegetation cover, land use, and other phenomena at a global scale[21]. The future of GIS and remote sensing looks bright, and their continued development and application will undoubtedly lead to further advancements in earth sciences and related fields.

2 Study area

Syrdarya is a region located in the Republic of Uzbekistan that was established on February 16, 1963. It shares borders with the Tashkent region to the east, the Jizzakh region to the west, the Republic of Kazakhstan to the north, and Tajikistan to the south. The region spans an area of 4.28 thousand km² and has a population of around 900 thousand people. Syrdarya consists of 8 districts named Boyovut, Gulistan, Mirzaabad, Aqoltin, Saykhunabad, Syrdarya, Khavos, and Sardoba. There are 5 cities and 6 towns in the region, including Gulistan, Bakht, Syrdaryo, Shirin, and Yangiyer; and the towns are called Boyovut, Dehkanabad, Dostlik, Pakhtaabad, Sayhun, and Khavos. The area was covered with a thick layer of sedimentary rocks during the Mesozoic and Cenozoic periods. Syrdarya is also home to caves such as Shurozak, Mirzarabot, and Sardoba. Lakes, swamps, and salt marshes occupy some parts of the plain. In Syrdarya, new canals and ditches were dug, and the desert was cultivated and turned into arable land. Irrigation facilities were built in the plains, and cotton fields, orchards, and vineyards were established. The hills consist of dry lands and pastures. The weather in Syrdarya is changeable and dry, with an average annual temperature of 14°. The average January temperature is -6° in the north and -2° in the south. In winter, the air cools down quickly, and the temperature can drop to -30° (-35° in Gulistan). Sometimes, in the middle of winter, the air suddenly gets colder.

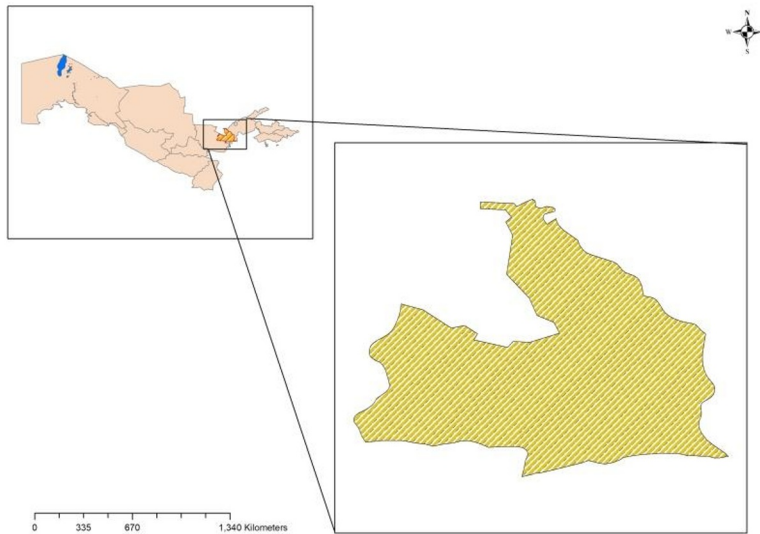


Fig. 1. Study area (Source: www.diva-gis.org/data adapted by ArcGIS)

Frost in late spring and early fall shortens the growing season of the plants. Summer is dry and hot, with an average temperature of 27-29°C in July. The temperature can rise to 32°-45°C, and hot wind dries the soil and adversely affects plant development. The vegetation period in Syrdarya lasts 218 days. The region receives annual precipitation of 180-220 mm, mostly in winter. Due to strong evaporation in summer, underground water fills the soil of the surface areas of Sharof Rashidov, Aqoltin, and Gulistan districts with salt. From November to March, the "Bekabad Wind" reaches speeds of up to 20-25 m/sec, sometimes up to 40 m/sec in the Boyovut district. This wind blowing in spring can sometimes kill budding buds. Isolate plantations have been established in Syrdarya, and the region's soils mainly consist of light-colored weak gray soils with low and medium salinity, consisting of sand and silt soils according to their mechanical structure. Saline and saline-like soils are found

3 Materials and methods

3.1 Materials

The study area's spatial image was obtained from the EarthExplorer database, and each section was filled in the following sequence:

The research area was selected using a circle, and the point was marked with its radius entered;

The spatial image of the selected research area was obtained for the desired year by entering the year in "search from";

Significant months for calculating NDVI and SAVI were selected in the "search month" section, which is mainly in the middle of spring and summer;

After closing the search criteria section, the Data Sets section was accessed;

The Landsat 8-9 OLI/TIRS spatial image of the area selected for the experiment was downloaded from the Earth Explorer database [22].

3.2 Data processing

Analyzing vegetation changes in the Syrdarya region required a series of steps to ensure accurate and reliable results. The initial pre-processing steps and operations on satellite images were crucial in improving the quality and accuracy of the remote sensing maps. This included atmospheric and geometric corrections, outlier removal, and mosaicking. Using ArcGIS 10.6 software packages, further analysis was conducted to interpret the results. The "Resample" GIS tool was employed to convert the actual pixel size of the satellite images to 150 meters x 150 meters. This expedited the analyzing process, returned an enhanced visualization, and reduced the size of the remote sensing images, which ensured proper data storage [23]. The Normalized Difference Vegetation Index (NDVI) was then used to detect the canopy cover from the satellite images. This index ranged from -1 to 1 and assessed whether the target being analyzed contained photosynthetically active vegetation or not using Equation 1. The NIR (Near InfraRed band of Landsat sensor Landsat 8 OLI) and RED (red band of the Landsat sensor) were crucial in this process. Vegetation cover above 0.3 NDVI was removed from each satellite image to improve the accuracy of the Soil-Adjusted Vegetation Index (SAVI) values. The SAVI values range from -1.5 to 1.5 and enable a sufficient description of the soil-vegetation system and soil type classification. This is essential for estimating the consequences of vegetation change using Equation 2. These methods and tools have resulted in accurate and reliable data on vegetation changes in the Syrdarya region. These steps are essential in remote sensing and provide a foundation for further analysis and interpretation of satellite data[24]. Using these methods, researchers can assess vegetation changes and make informed decisions about land-use change and management. Overall, using these tools and techniques is essential in remote sensing and provides valuable insights into environmental changes, enabling informed decision-making to protect and manage natural resources.

$$NDVI = \frac{NIR - RED}{NIR + RED} \quad (1)$$

$$SAVI = \left(\frac{NIR - RED}{NIR + RED} \right) \times (1 + L) \quad (2)$$

Where: NIR is the Near InfraRed band of the Landsat sensor, and L is a soil adjustment factor $L = 0.5$.

4 Results

To carry out research in the region of Sirdarya, ArcGIS software was used, and NDVI was calculated. Remote sensing facilitates some tasks and serves as a convenient tool for monitoring the changes in permanent vegetation, water area, land area, relief, and other factors with the help of photos taken from space. The map created by this ArcGIS program was converted from vector to raster. It helps to calculate the area of the vegetation layer, which is distinguished by colors on the map Fig.2.

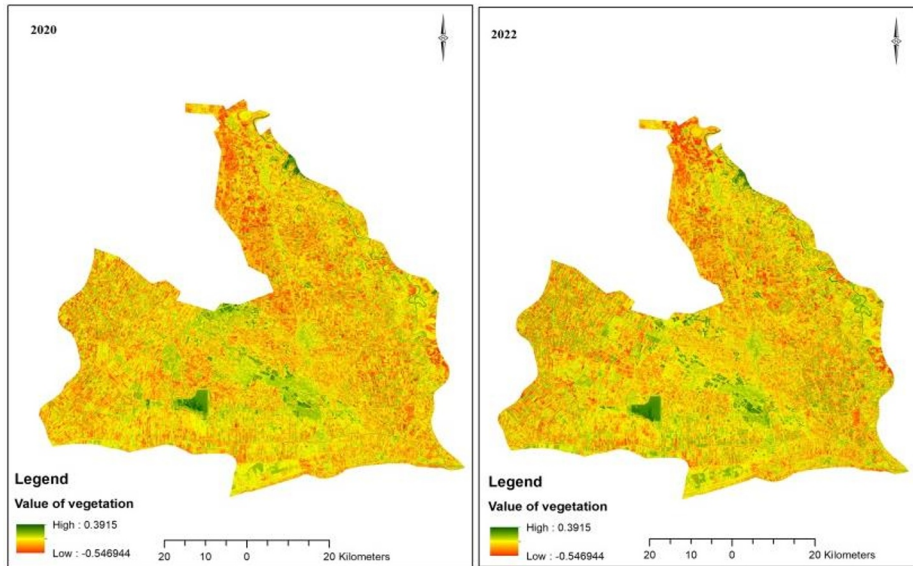


Fig. 2. NDVI analysis map of study area.

Table 1. Classes on the health and unhealthy plants for 2020-2022

№	classes	number of pixels	calculated land area (ha)	number of pixels	calculated land area (ha)
		2020	2022	2020	2022
1	Water	197205	23465	17748.45	2111.85
2	Objects or dead plants	498985	37383	44908.65	3364.47
3	Unhealthy plants	3407615	4540952	306685.3	408685.7
4	Average healthy plants	1331361	835226	119822.5	75170.34
5	Healthy plants	1860	0	167.4	0

According to the results, the vegetation indicator in the agricultural land areas of the Syrdarya region increased in 2022 compared to 2020. This is an encouraging sign, as it suggests that the agricultural sector in the region may be experiencing a positive trend. However, this increase in vegetation may be attributed to a change in the soil properties in these areas. In May 2020, the Sardoba reservoir dam was destroyed, leading to the flooding of large areas and a decrease in soil fertility. As a result, farmers in the region experienced challenges in cultivating crops, as the soil's lack of nutrients affected the plants' health. Moreover, the reservoir damage also caused a water shortage for irrigation purposes, which further negatively impacted the land areas in the region. The increase in vegetation indicators in the agricultural land areas of the Syrdarya region in 2022 could suggest that the soil properties have started to recover from the damage caused by the reservoir disaster. This could be due to the natural regeneration of the soil or through farmers' implementation of soil conservation techniques in the region. The improvement in the soil properties is crucial for the success of the agricultural sector in the region, as it provides the necessary nutrients for plant growth. The positive trend in the vegetation indicators in the Syrdarya region is a positive sign. However, much work still needs to be done to ensure sustainable

agricultural practices in the region. The destruction of the Sardoba reservoir dam highlights the vulnerability of the agricultural sector in the region to natural disasters and the need for effective disaster management strategies to mitigate such events' impact on farmers' livelihoods.

Table 2. Plant health classes have been introduced.

<i>pixel spacing</i>	<i>classes</i>
<0	Water
0.03-0	Objects or dead plants
0.03-0.3	Unhealthy plants
0.3-0.5	Average healthy plants
0.5>	Healthy plants

One approach to mitigating the impact of natural disasters on the agricultural sector is to invest in water management systems that can provide reliable irrigation water sources. This could involve the construction of new reservoirs, the implementation of rainwater harvesting techniques, or the installation of efficient irrigation systems that minimize water wastage. Such initiatives can help to reduce the dependence of farmers on rainfall, which can be unpredictable, and increase their resilience to climate change. In addition to investing in water management systems, it is also important to promote sustainable land management practices that can enhance soil fertility and promote long-term productivity (Table 1.2). This could involve the use of organic fertilizers, the adoption of crop rotation techniques, or the implementation of conservation tillage practices that minimize soil erosion. Such initiatives can help ensure that the Syrdarya region's soil remains healthy and productive, even in the face of natural disasters or climate change. Overall, the increase in vegetation indicators in the agricultural land areas of the Syrdarya region in 2022 is a promising sign, but it should not be taken as an indication that the agricultural sector in the region is out of the woods. There is still much work to be done to ensure that farmers in the region have access to the resources and technologies they need to promote sustainable agricultural practices and enhance their resilience to natural disasters and climate change. Investing in water management systems and promoting sustainable land management practices makes it possible to create a more vibrant and resilient agricultural sector in the Syrdarya region, one that can provide a reliable source of food and income for the region's people for years to come.

5 Discussion

Islamov et al. [16] recommended using remote sensing technologies in monitoring vegetation areas and reducing mapping costs. The use of multi-temporal satellite imagery to map vegetation growth and soil salinity mapping from a limited number of points within fields of varying vegetation growth has been demonstrated, and the feasibility of using this approach was emphasized to increase the accuracy of the vegetation map with minimal costs for vegetation sampling [5, 8-10]. Baban et al. [11] stated in the study that there is a significant correlation between quantitative plant attributes and plants. This approach has been successfully used to qualitatively assess vegetation at the scale of agricultural crops based solely on quantitative vegetation variables. Therefore, vegetation variables should be highly accurate or easily measurable for the study area [5, 7].

6 Conclusions

In the Syrdarya region, the number of cultivated areas of healthy plants has decreased from 2000 to 2022 for various reasons, including changes in weather and ecology, population

increase, and use of land for the construction of residential areas. The region has also experienced significant growth in industrial enterprises, which has impacted plant growth. The soil and water quality are critical factors for plant growth, and the NDVI map of the region created using ArcGIS indicates a significant reduction in the area occupied by water. This has led to groundwater use for crop irrigation, reducing soil fertility and increasing salinity. These factors have contributed to the decline in healthy plant growth and an increase in unhealthy plant growth.

References

1. Malik M S, Shukla J P and Mishra S 2019 Relationship of LST, NDBI and NDVI using landsat-8 data in Kandaihimmat watershed, Hoshangabad, India *Indian J. Geo-Marine Sci.* **48** 25–31
2. Bhunia G S, Shit P K, Pourghasemi H R and Edalat M 2019 *Prediction of Soil Organic Carbon and its Mapping Using Regression Analyses and Remote Sensing Data in GIS and R* (Elsevier Inc.)
3. Kobayashi N, Tani H, Wang X and Sonobe R 2020 Crop classification using spectral indices derived from Sentinel-2A imagery *J. Inf. Telecommun.* **4** 67–70
4. Tam N T, Dat H T, Tam P M, Trinh V T and Hung N T 2020 Agricultural Land-Use Mapping with Remote Sensing Data Agricultural Land-Use Mapping with Remote Sensing Data
5. Tsangaratos P, Ilia I and Matiatos I 2019 *Spatial Analysis of Extreme Rainfall Values Based on Support Vector Machines Optimized by Genetic Algorithms* (Elsevier Inc.)
6. Aslanov I 2022 Preface *IOP Conf. Ser. Earth Environ. Sci.* **1068** 9–11
7. Aslanov I, Jumaniyazov I and Embergenov N 2023 Remote Sensing for Land Use Monitoring in the Suburban Areas of Tashkent, Uzbekistan Ilhomjon ed A Beskopylny, M Shamtsyan and V Artiukh *Springer Int. Publ.* **575** 1899–907
8. Mamatkulov Z, Rashidov J, Eshchanova G, Berdiev M and Abdurakhmonov Z 2020 Visualization and analysing the state of hydrotechnical construction via geospatial methods (on the example of Kharshi pumping stations cascade) *IOP Conf. Ser. Earth Environ. Sci.* **614** 012086
9. Ruzikulova O, Sabitova N and Kholdorova G 2021 The role of GIS technology in determining irrigated geosystems ed L Foldvary and I Abdurahmanov *E3S Web Conf.* **227** 03004
10. Oymatov R and Safayev S 2021 Creation of a complex electronic map of agriculture and agro-geo databases using GIS techniques *E3S Web Conf.* **258** 1–12
11. Baban S M J and Luke C 2000 Mapping agricultural land use using retrospective ground referenced data, satellite sensor imagery and GIS *Int. J. Remote Sens.* **21** 1757–62
12. Thenkabail P S 2009 *Water productivity mapping using remote sensing data of various resolutions to support "more crop per drop"* vol 3
13. Ten Y, Oymatov R, Khayitov K, Saydaliyeva G, Nulloev U and Nematov I 2021 Application of modern geodetic tools in the operation of railway reconstructions ed L Foldvary and I Abdurahmanov *E3S Web Conf.* **227** 04004
14. Mukhtorov U 2021 Stimulating the efficient use of agricultural land based on the improved methodology for land tax calculation ed V Breskich and S Uvarova *E3S Web Conf.* **244** 03013

15. Khasanov S, Kulmatov R, Li F, van Amstel A, Bartholomeus H, Aslanov I, Sultonov K, Kholov N, Liu H and Chen G 2023 Impact assessment of soil salinity on crop production in Uzbekistan and its global significance *Agric. Ecosyst. Environ.* **342** 108262
16. Isломov S, Aslanov I, Shamuratova G, Jumanov A, Allanazarov K, Daljanov Q, Tursinov M and Karimbaev Q 2023 Monitoring of Land and Forest Cover Change Dynamics Using Remote Sensing and GIS in Mountains and Foothill of Zaamin, Uzbekistan ed A Beskopylny, M Shamtsyan and V Artiukh *Springer Int. Publ.* **575** 1908–14
17. Nouri H, Borujeni S C, Alaghmand S, Anderson S J, Sutton P C, Parvazian S and Beecham S 2018 Soil salinity mapping of urban greenery using remote sensing and proximal sensing techniques; The case of veale gardens within the adelaide parklands *Sustain.* **10** 1–14
18. SCHÖPFER LANG, S., BLASCHKE, T. E 2005 A "Green Index" incorporating remote sensing and citizen's perception of green space. *Int. Arch. Photogramm. Remote Sens. Spat. Inf. Sci. Vol. XXXVII-5/W1, Tempe, AZ, 1-6*
19. Kholdorov S, Jabbarov Z, Aslanov I, Jobborov B and Rakhmatov Z 2021 Analysing effect of cement manufacturing industry on soils and agricultural plants ed A Zheltenkov and A Mottaeva *E3S Web Conf.* **284** 02005
20. Aslanov I, Kholdorov S, Ochilov S, Jumanov A, Jabbarov Z, Jumaniyazov I and Namozov N 2021 Evaluation of soil salinity level through using Landsat-8 OLI in Central Fergana valley, Uzbekistan ed V Kankhva *E3S Web Conf.* **258** 03012
21. Zhu Z, Fu Y, Woodcock C E, Olofsson P, Vogelmann J E, Holden C, Wang M, Dai S and Yu Y 2016 Including land cover change in analysis of greenness trends using all available Landsat 5, 7, and 8 images: A case study from Guangzhou, China (2000–2014) *Remote Sens. Environ.* **185** 243–57
22. Usman M, Liedl R, Shahid M A and Abbas A 2015 Land use/land cover classification and its change detection using multi-temporal MODIS NDVI data *J. Geogr. Sci.* **25** 1479–506
23. Islam M R, Khan M N I, Khan M Z and Roy B 2021 A three decade assessment of forest cover changes in Nijhum dwip national park using remote sensing and GIS *Environ. Challenges* **4** 100162
24. Kafy A-A, Al Rakib A, Akter K S, Rahaman Z A, Faisal A-A, Mallik S, Nasher N M R, Hossain M I and Ali M Y 2021 Monitoring the effects of vegetation cover losses on land surface temperature dynamics using geospatial approach in Rajshahi City, Bangladesh *Environ. Challenges* **4** 100187